

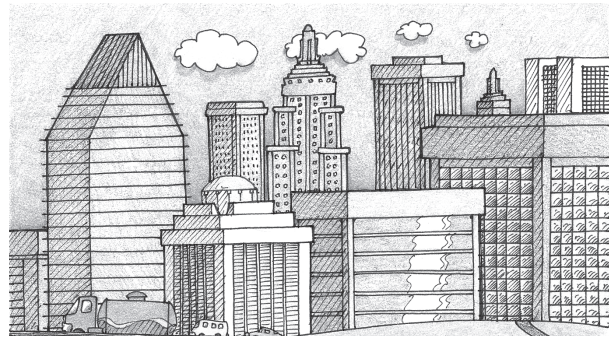
Look closely at the image your teacher has projected. With your partner, discuss and record answers to the questions below.

What do the bright areas on this photograph of the United States represent? What do the dark areas represent?

In which half of the country do more people live, the East or the West? Why do you think this might be so?

There is a concentration of lights in the Northeast. Compare this image with the large U.S. map on your Interactive Desk Map, which shows some of the cities of the Northeast. Which large cities are bunched together along the Northeast coast of the United States?

Read Sections 4 through 8. Record notes in the appropriate spaces.



Life in the Northeast Megalopolis

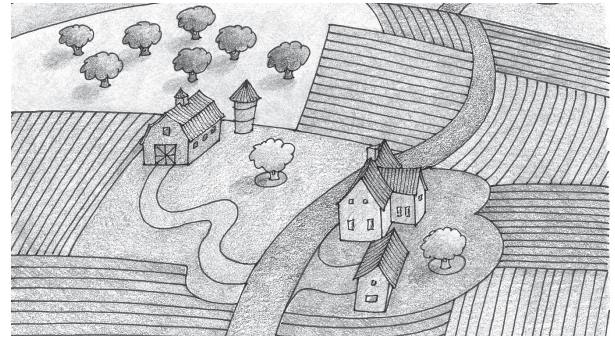
4. Housing

5. Employment

6. Transportation

7. Environment

8. Recreation



Life in a Small Northeastern Town

4. Housing

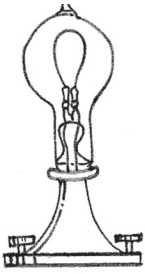
5. Employment

6. Transportation

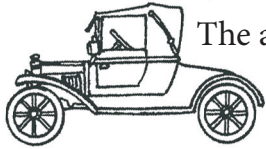
7. Environment

8. Recreation

1. Briefly explain how these inventions changed city life.



Electricity changed city life in this way:



The automobile changed city life in this way:

2. Draw a picture of something you could invent to solve one problem of living in a densely populated city. Look at the following list for ideas:

- places to live
- getting around
- people and pollution

Create a simple comic strip about life in the Northeast. Follow these steps:

- Give your comic strip a title. Enter your name as the author.
- Create two characters. One is from the megalopolis. The other is from a farm and has never visited a large city. Draw sketches of the two characters in the four frames of the cartoon. Put any words the characters say in speech bubbles.
- In your cartoon, mention at least two of these topics: *housing, employment, transportation, the environment, and recreation.*

<p>Title:</p> <p>By:</p>	